

# FROM BOGOR TO GLOBAL TRADE

No. Abstract: *ABS-ICOLLITE-23195*

<sup>1)</sup>Nanang Saptono, <sup>2)</sup>Endang Widyastuti, <sup>1)</sup>Nurul Laili

<sup>1)</sup>Research Center for Environmental Archaeology, Maritime Archaeology,  
and Cultural Sustainability, National Research and Innovation Agency

<sup>2)</sup>Research Center for Prehistoric and History Archeology, National  
Research and Innovation Agency

# INTRODUCTION

- Bogor is located in upstream of Ci Liwung and Ci Sadane
- In Bogor there are archaeological objects from the Tarumanagara Kingdom and Sunda Kingdom,
- Kingdoms can develop supported by trade activities (Pomper, 2005).
- Trade centers are usually located on the coast
- Bogor is inland

# LITERATURE REVIEW

- Oriental despotism teory (Wittfogel 1953).
- The ecosystem of the Sundanese community as a farmer cannot grow into a large kingdom (Rahardjo, 2007).
- Tarumanegara Kingdom from the 4th-9th centuries, the Tarumanegara Kingdom once controlled the region (Widyastuti, 2013).
- The 16th century in Bogor became the center of the Sunda kingdom (Widyastuti & Saptono, 2022).

# METHOD

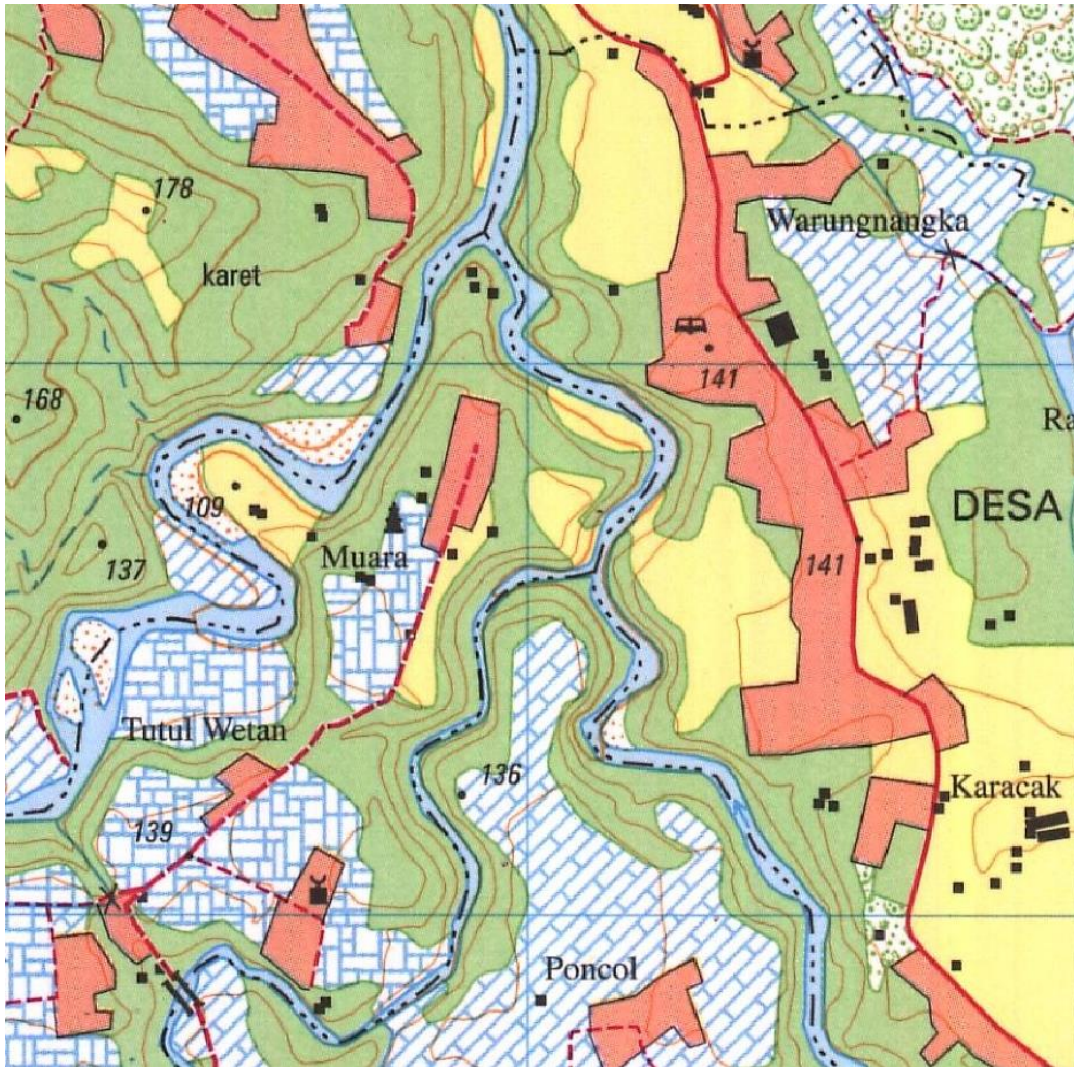
- Qualitative methods through archaeological and historical approaches. Studies on geographical aspects.

# FINDING AND DISCUSSION

- Inscriptions during the Tarumanegara Kingdom are Ciaruteun inscription, Kebonkopi (Tapak Gajah), Muara Cianten, Pasir Awi, and the Pasir Koleangkak (Jambu) inscription. The location of the findings is mostly in Muhara Village, are around the confluence of the Ci Aruteun and Ci Sadane rivers.
- Traces of the Sunda Kingdom were found in Bogor City.
- The Batutulis inscription, statues of Pajajaran type, and the area of the former capital of the Sunda Kingdom are between Ci Liwung and Ci Sadane



- Location of Muhara Village



- Location of the former capital of the Sunda Kingdom (Pakwan Pajajaran)



- An empire will develop if supported by a global trade sector centered on the coast.
- The Sunda Kingdom also conducted global trade.
- Bogor in inland to coast area has access through Ci Liwung and Ci Sadane.
- At the estuary of Ci Sadane there is the Cheguide trading port. While the Ci Liwung estuary is close to Sunda Kelapa Port (Pires 2014; Saptono 1998).
- Based on information in ancient manuscripts, the Sunda Kingdom also carried out maritime activities in the form of interinsular trade (Saptono 2018).



# CONCLUSION

- Tarumanegara's control of Bogor shows that the area is important.
- The Sunda Kingdom placed its capital in the region.
- Between Bogor and cities in the coast is connected through the Ci Liwung and Ci Sadane streams.
- Control of waters can control world global trade activities. From Bogor through Ci Liwung and Ci Sadane will be connected to trading ports in Cheguide and Sunda Kalapa so as to create world global trade



# REFERENCES

- Pires, T. (2014). *Suma Oriental Perjalanan dari Laut Merah ke Cina & Buku Francisco Rodrigues*. Penerbit Ombak.
- Pomper, P. (2005). The history and theory of empires. *History and Theory*, 44(4), 1–27. <http://www.jstor.org/stable/3590855>
- Rahardjo, S. (2007). *Kota-kota Prakolonial Indonesia, Pertumbuhan dan Keruntuhan*. Fakultas Ilmu Pengetahuan Budaya, Universitas Indonesia.
- Saptono, N. (1998). Chegude. In T. Djubiantono, L. Yondri, Y. Arbi, & N. Saptono (Ed.), *Dinamika Budaya Asia Tenggara - Pasifik dalam Perjalanan Sejarah* (hal. 241–250). IAAI Komda Jawa Barat-Banten.
- Saptono, N. (2018). Aktivitas kemaritiman masa Kerajaan Sunda. In S. Rahardjo, N. Anggraeni, T. S. Nastiti, & W. D. Ramelan (Ed.), *Warisan Budaya Maritim Nusantara* (hal. 26–37). Kementerian Pendidikan dan Kebudayaan.
- Widyastuti, E. (2013). Penguasaan Kerajaan Tarumanegara terhadap kawasan hulu Ci Sadane. In *Purbawidya* (Vol. 2, Nomor 2, hal. 142–150).
- Widyastuti, E., & Saptono, N. (2022). Gambaran religi masyarakat Pakwan Pajajaran berdasarkan tinggalan arkeologis. *Jurnal Panalungtik*, 5(2), 104–121. <https://doi.org/10.55981/panalungtik/2022.85>
- Wittfogel, K. A. (1953). Oriental despotism. *Sociologus*, 3(2), 96–108. <http://www.jstor.org/stable/43643798>

# THANK YOU!

[nanangsaptono@gmail.com](mailto:nanangsaptono@gmail.com)